



**UNIVERSIDADE FEDERAL  
DE SANTA CATARINA**  
Campus Araranguá

# **MAPEAMENTO DOS PROCESSOS ACADÊMICOS**

Secretaria Acadêmica

Araranguá, 2015.

## **ORGANIZAÇÃO**

JULIANA PIRES DA SILVA

ARACHELIS DA SILVA LUZIETTI

CARINE MORAES DA CUNHA

FRANCIELE DE SOUZA CAETANO VIEIRA

JULIANA VAMERLATI SANTOS

MARCIA ELIDA DOMINGOS PRUDÊNCIO

VALDIRENE MOTTA HAHN GONÇALVES

## **BOLSISTAS PIBIC**

DANIEL MACIEL

JÉSSICA DE SOUZA NUNES

## **COLABORADORES**

FABRICIO DE OLIVEIRA OURIQUE

## ÍNDICE

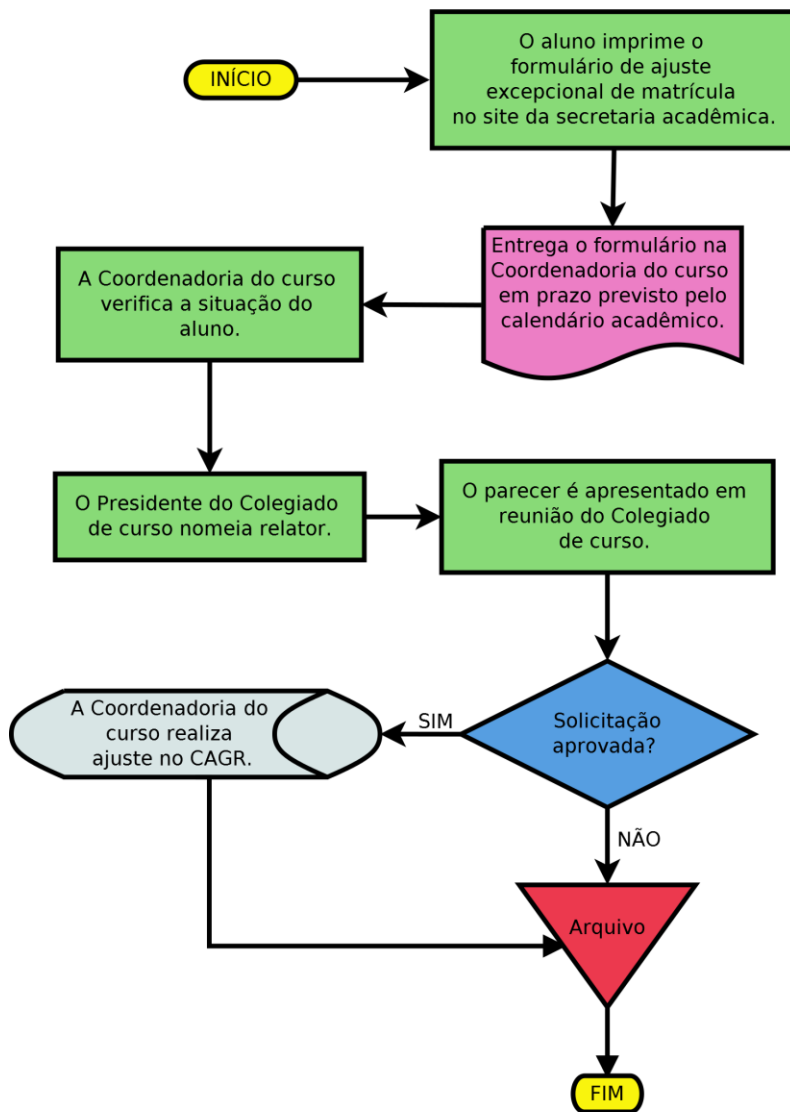
- I. Ajuste excepcional de matrícula
- II. Aproveitamento extraordinário de estudos
- III. Cancelamento de curso
- IV. Formatura em Conjunto
- V. Formatura em Separado
- VI. Matrícula de Aluno regular
- VII. Matrícula de Calouro – Vestibular
- VIII. Mobilidade Acadêmica
- IX. Requerimento de Segunda Avaliação
- X. Revisão de Avaliação
- XI. Trancamento de Matrícula
- XII. Transferência Coercitiva
- XIII. Transferências via Edital de Transferências e Retornos
- XIV. Validação de disciplina

## **APRESENTAÇÃO**

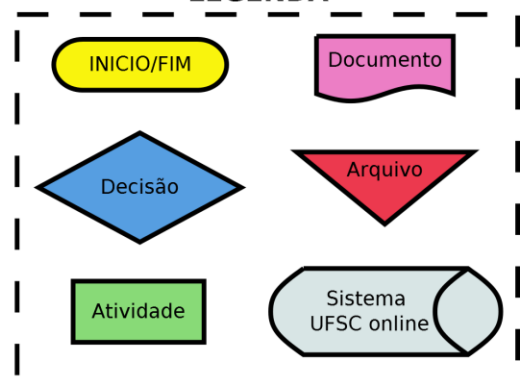
A equipe da Secretaria Acadêmica do Campus Araranguá, com o intuito de orientar a comunidade acadêmica sobre os procedimentos que competem ao seu setor, realizou o mapeamento dos seus processos, identificando as etapas e responsabilidades dos setores envolvidos em cada tipo de solicitação. Este mapeamento dos processos foi construído em forma de fluxogramas porque facilita a visualização e entendimento de cada tarefa a ser realizada.

Atenciosamente,  
A equipe.

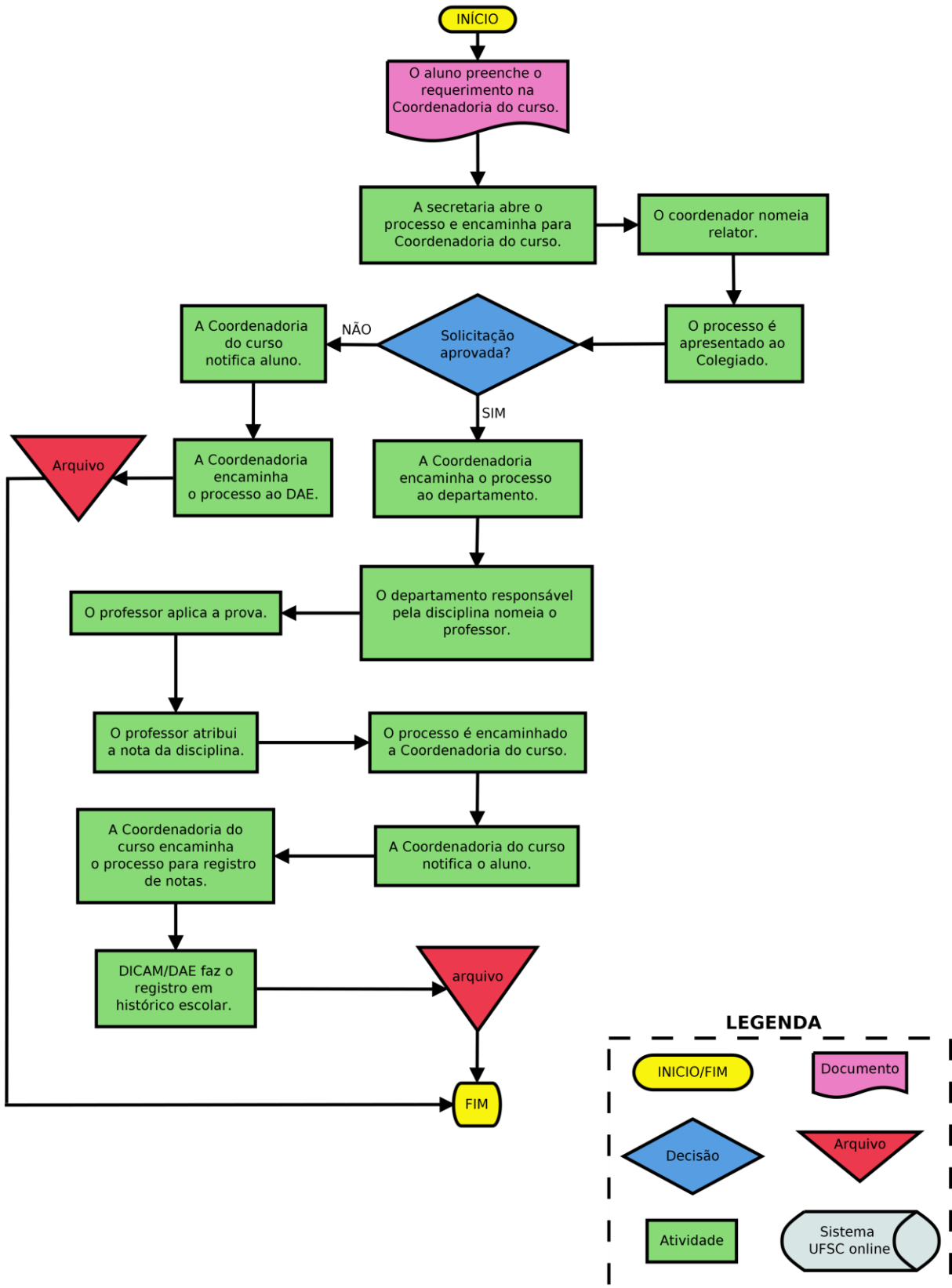
## Ajuste excepcional de Matrícula



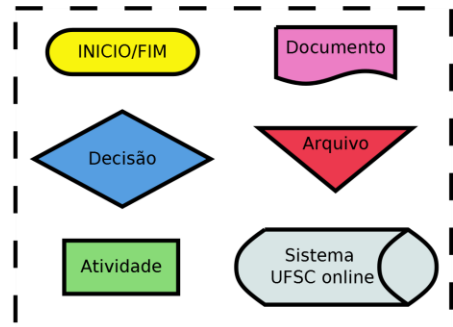
### LEGENDA



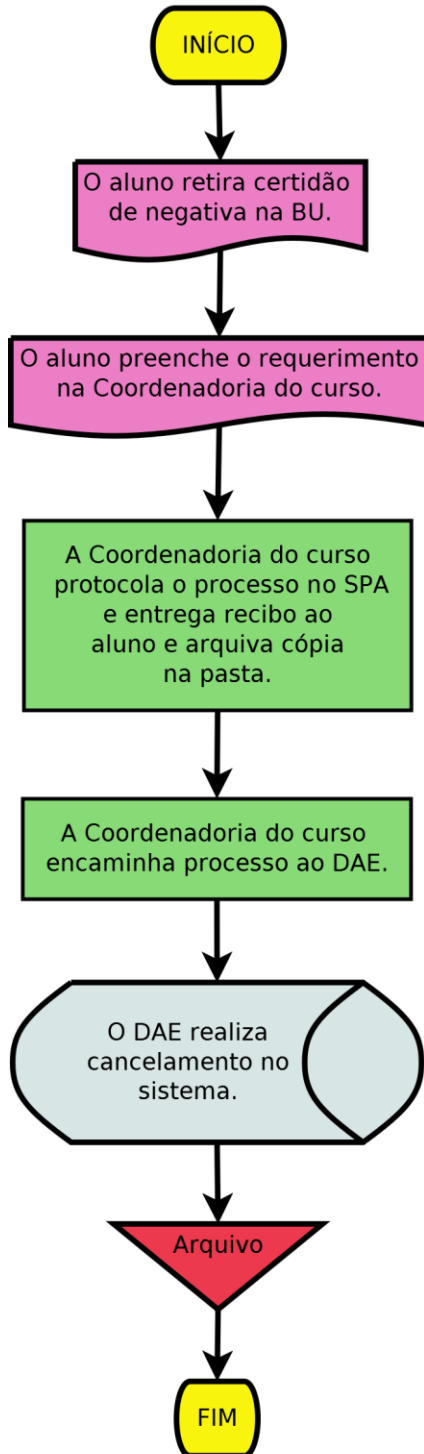
## Aproveitamento extraordinário de estudos



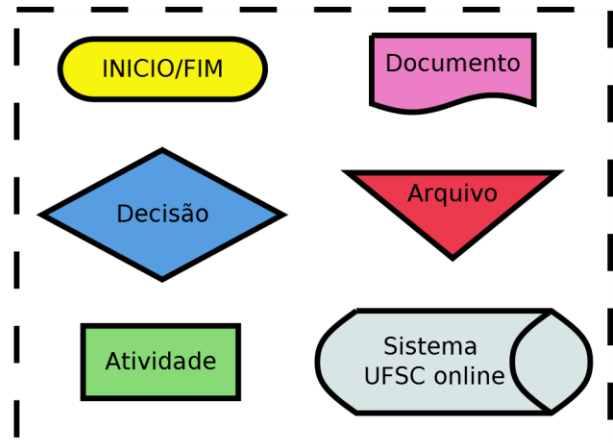
### LEGENDA



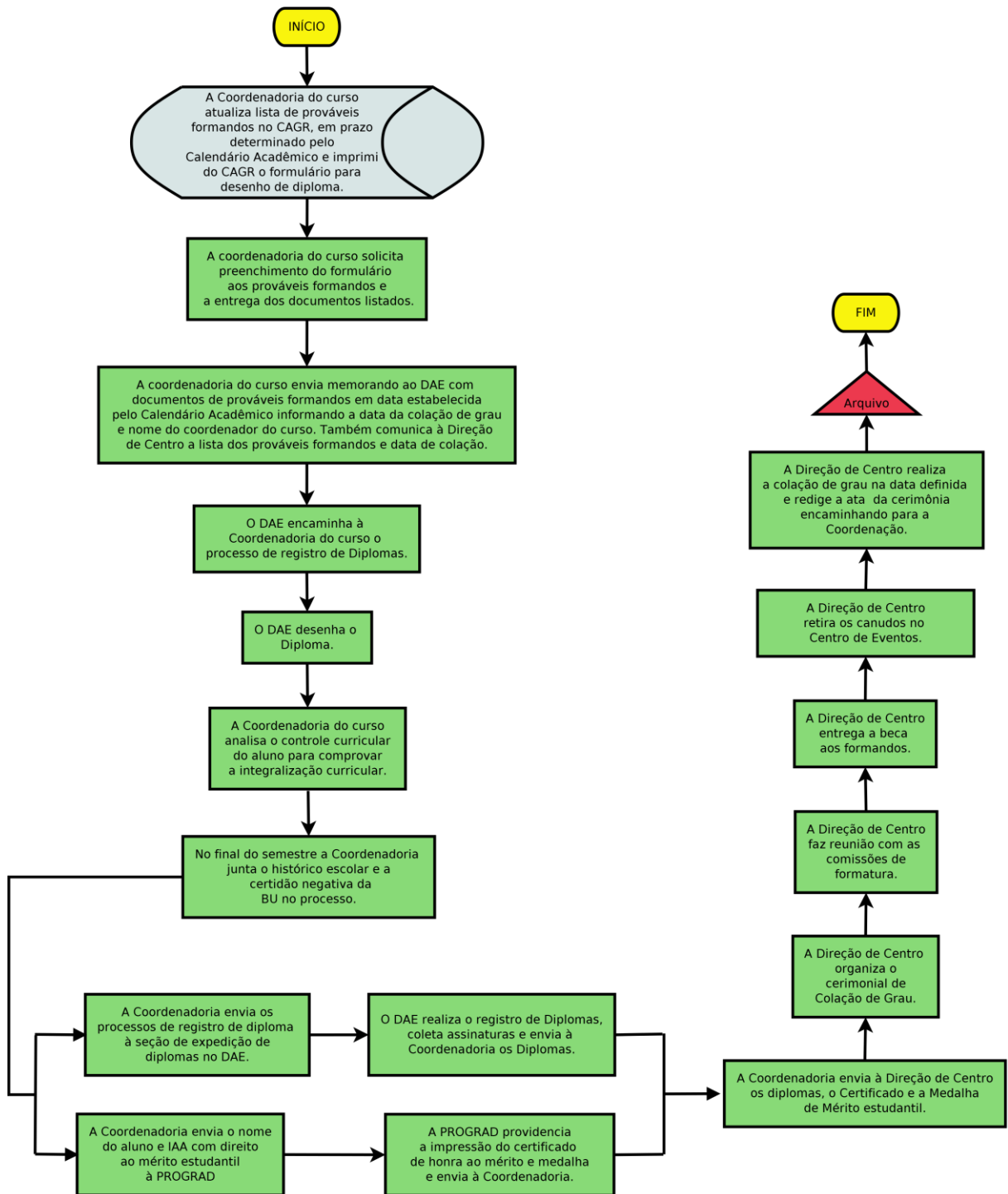
# Cancelamento de Curso



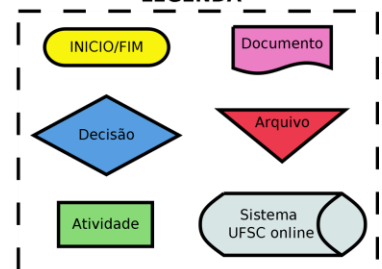
## LEGENDA



## Formatura em Conjunto

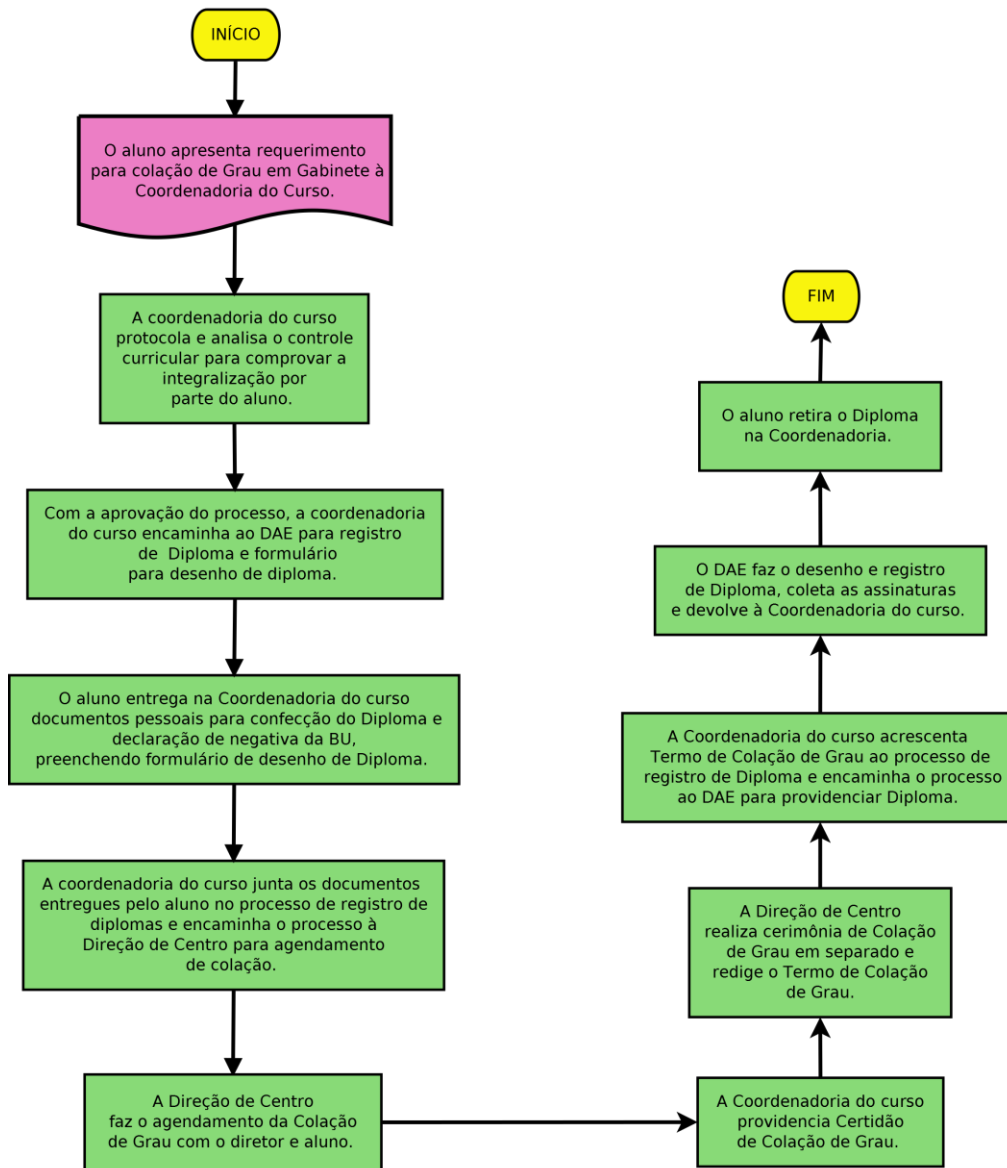


### LEGENDA

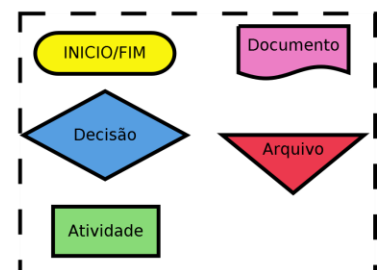




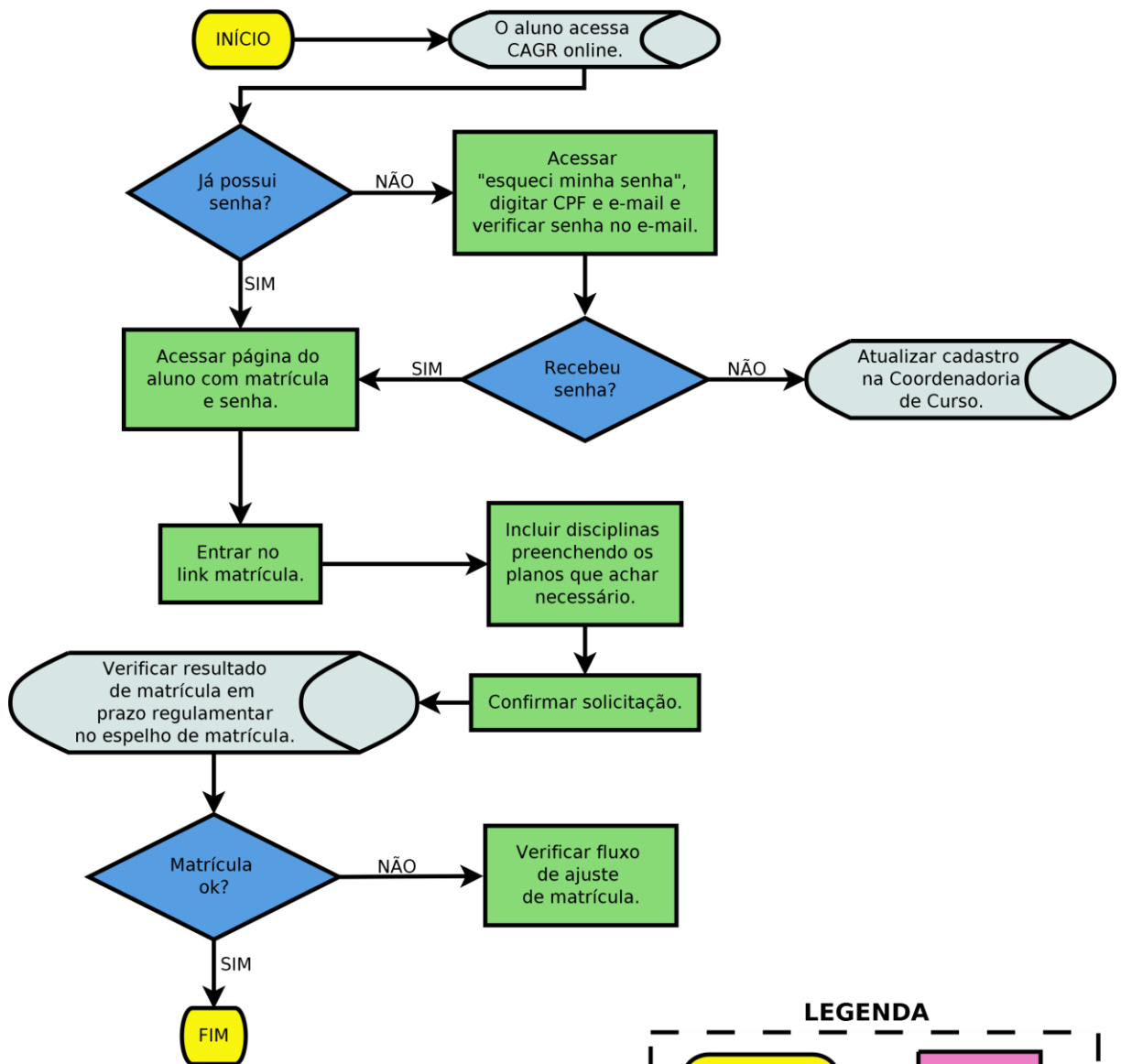
## Formatura em Separado



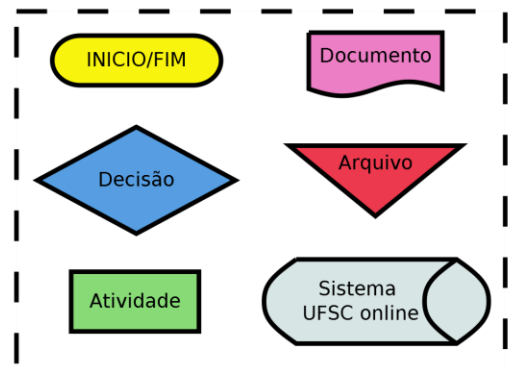
### LEGENDA



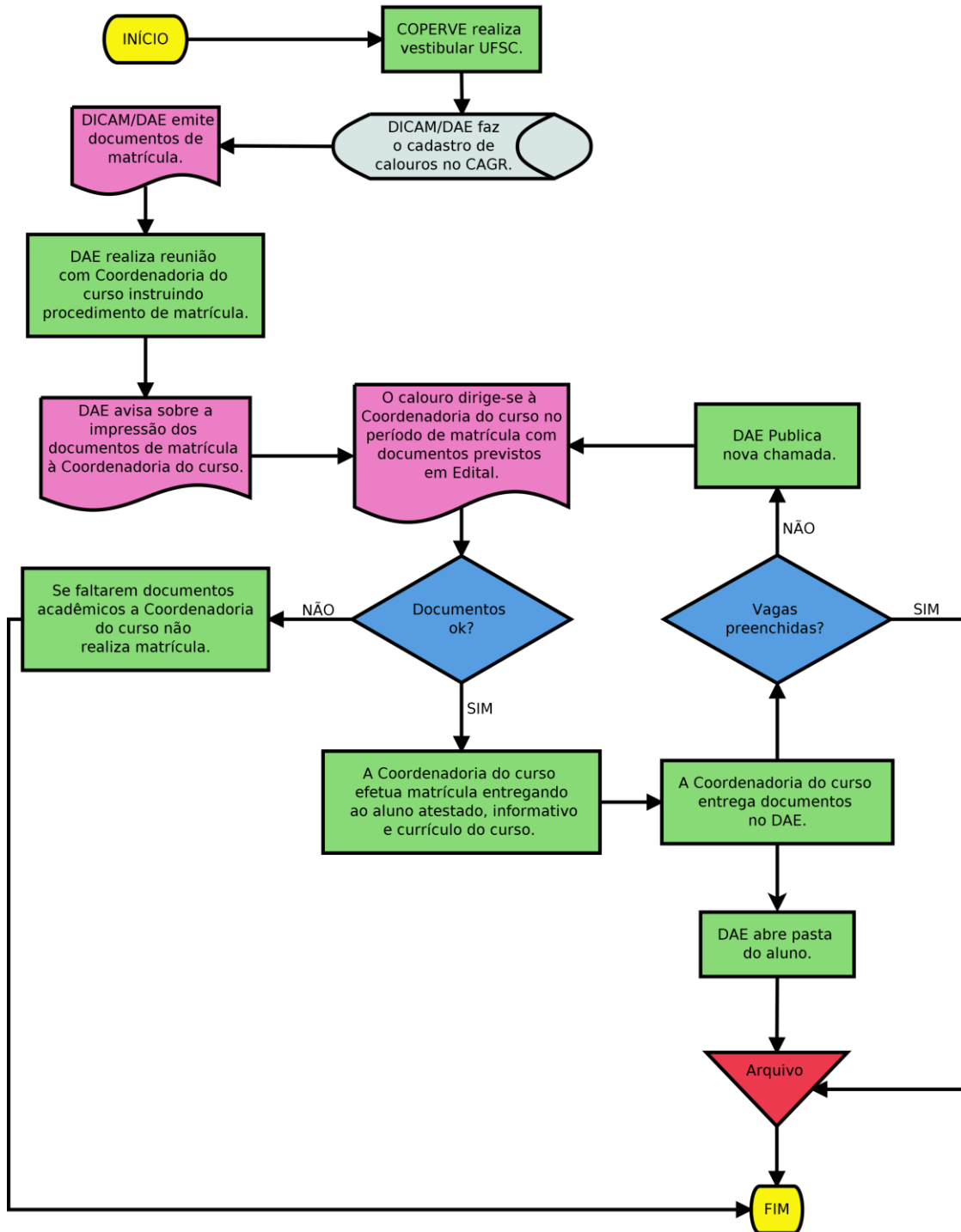
## Matrícula de Alunos Regulares



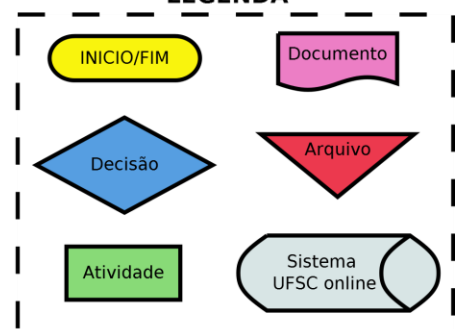
### LEGENDA



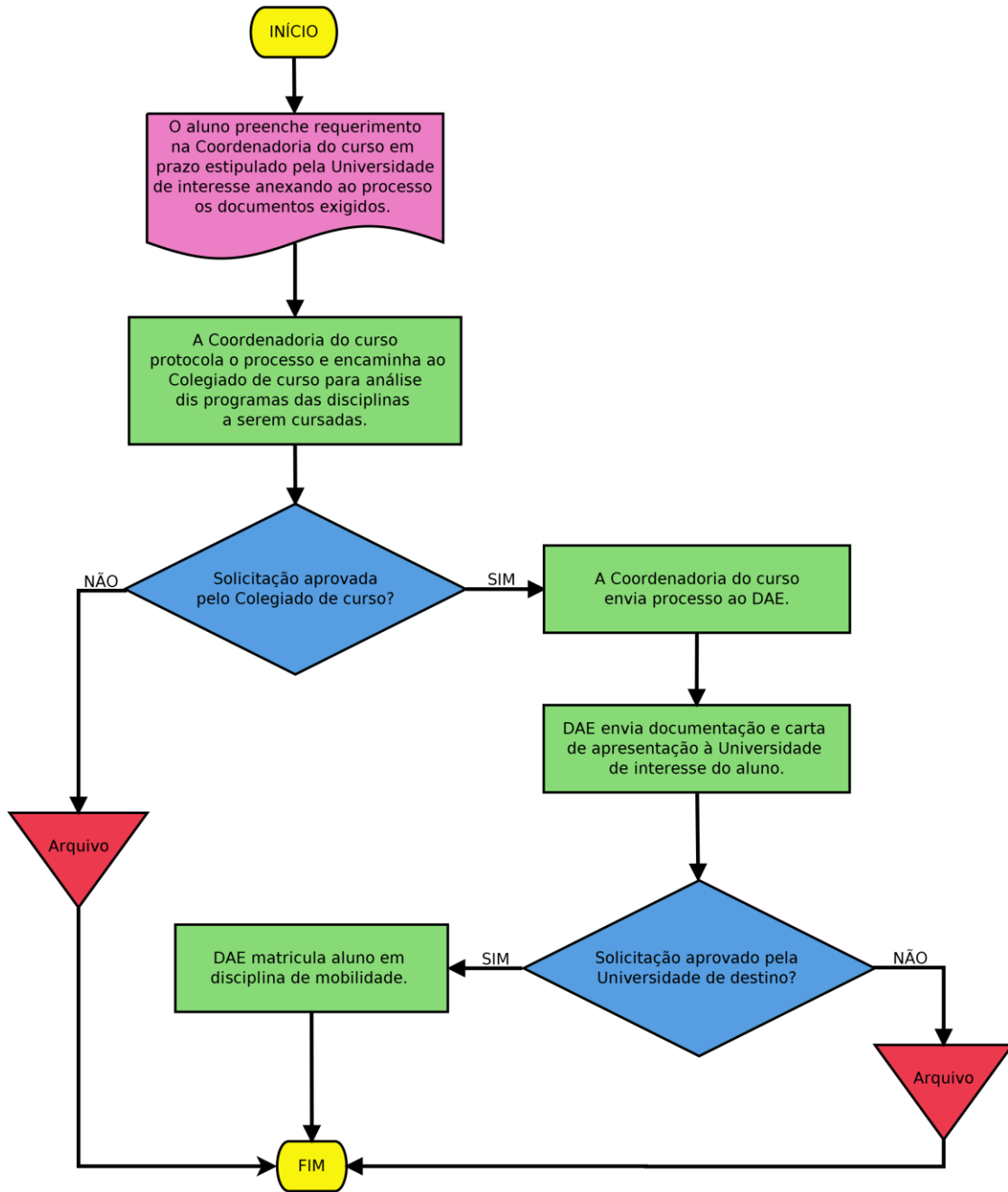
## Matrícula de Calouros do vestibular - UFSC



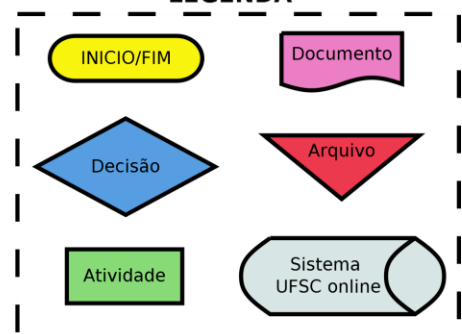
### LEGENDA



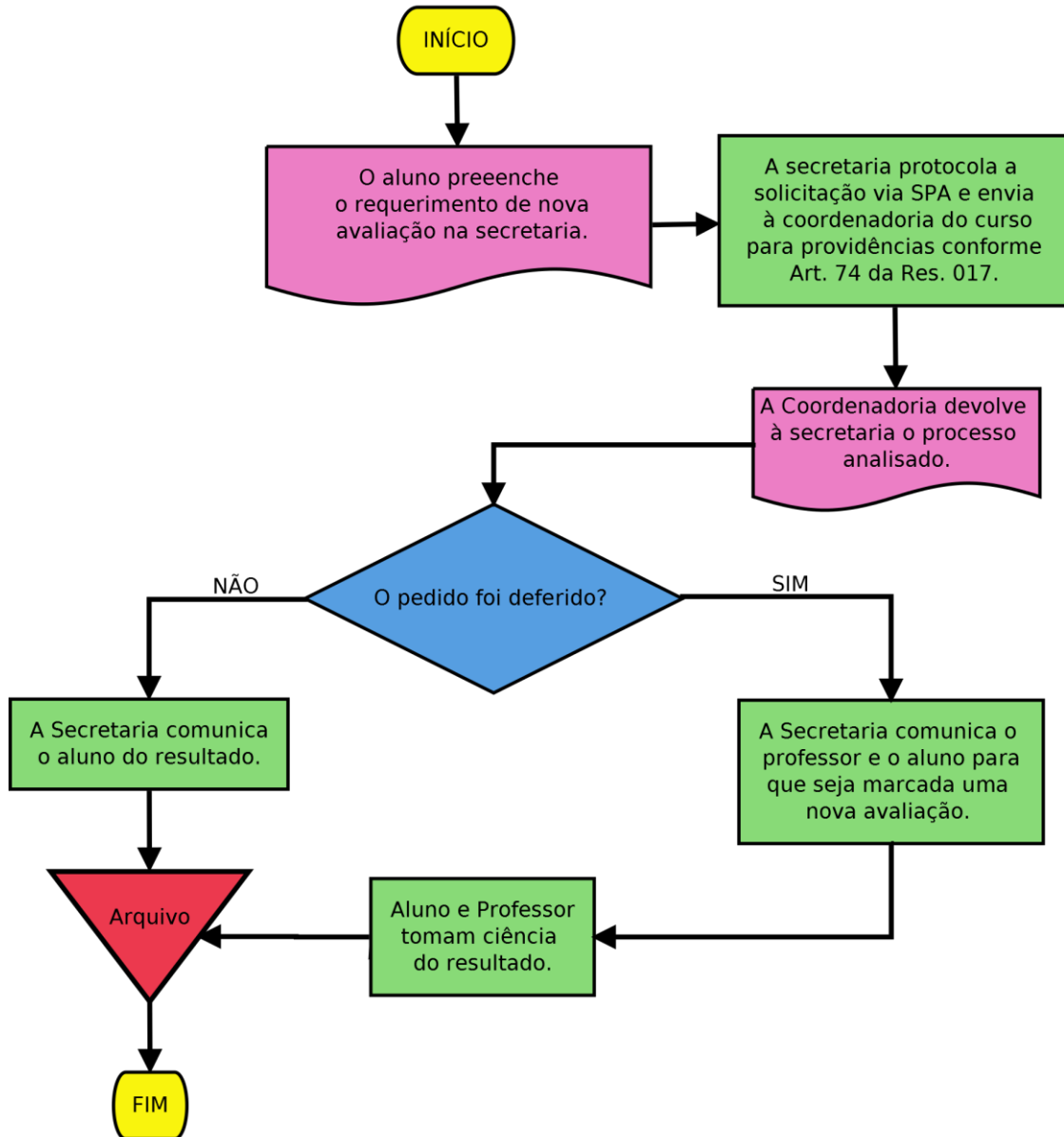
## Mobilidade Acadêmica



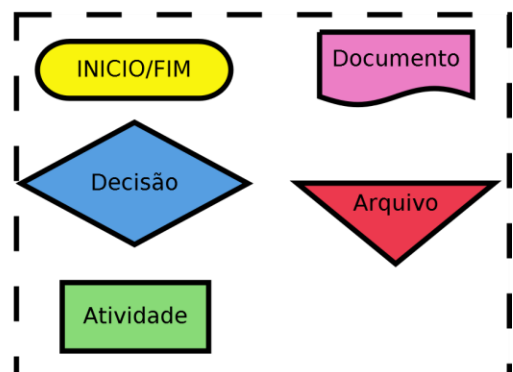
### LEGENDA



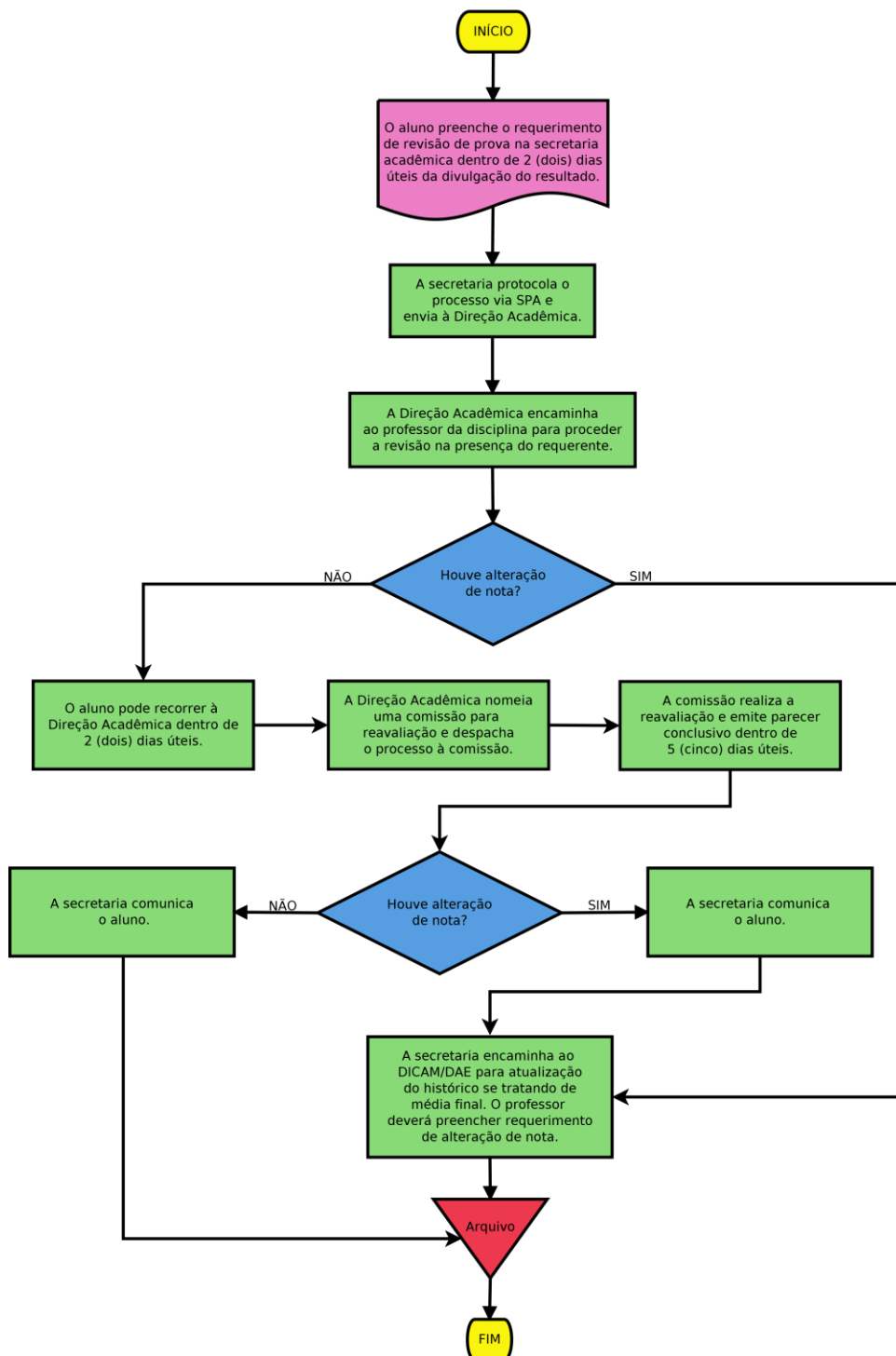
# Requerimento para segunda avaliação



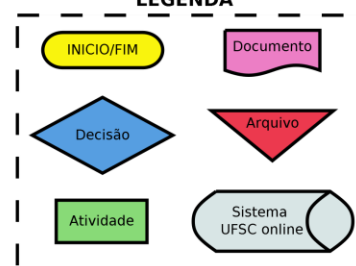
## LEGENDA



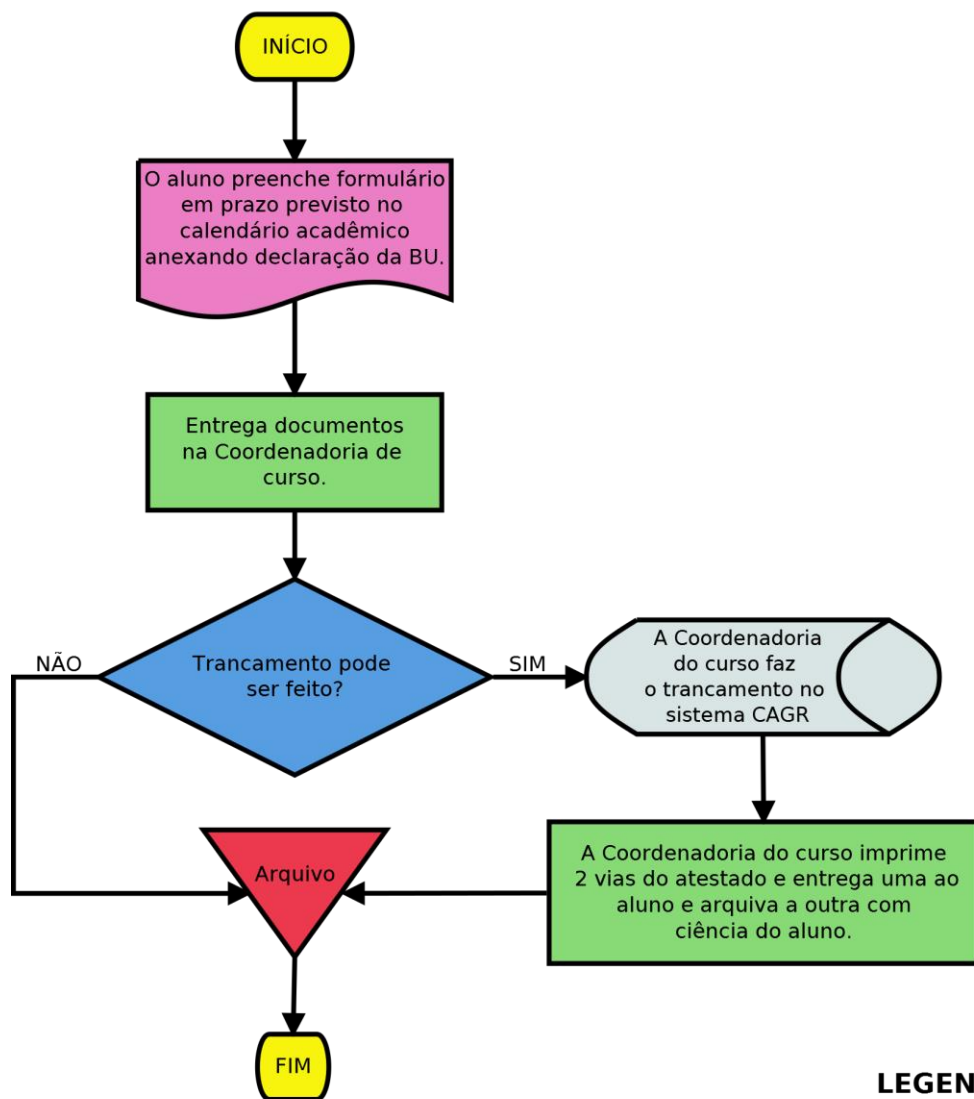
## Revisão de Avaliação



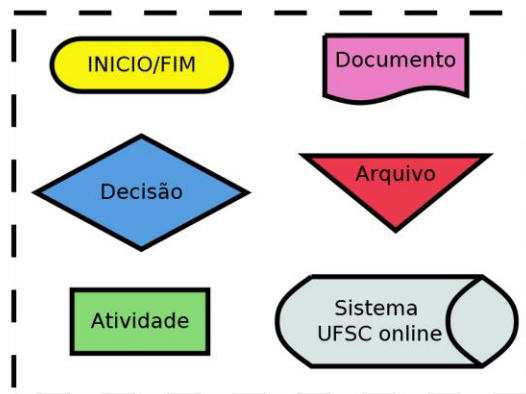
### LEGENDA



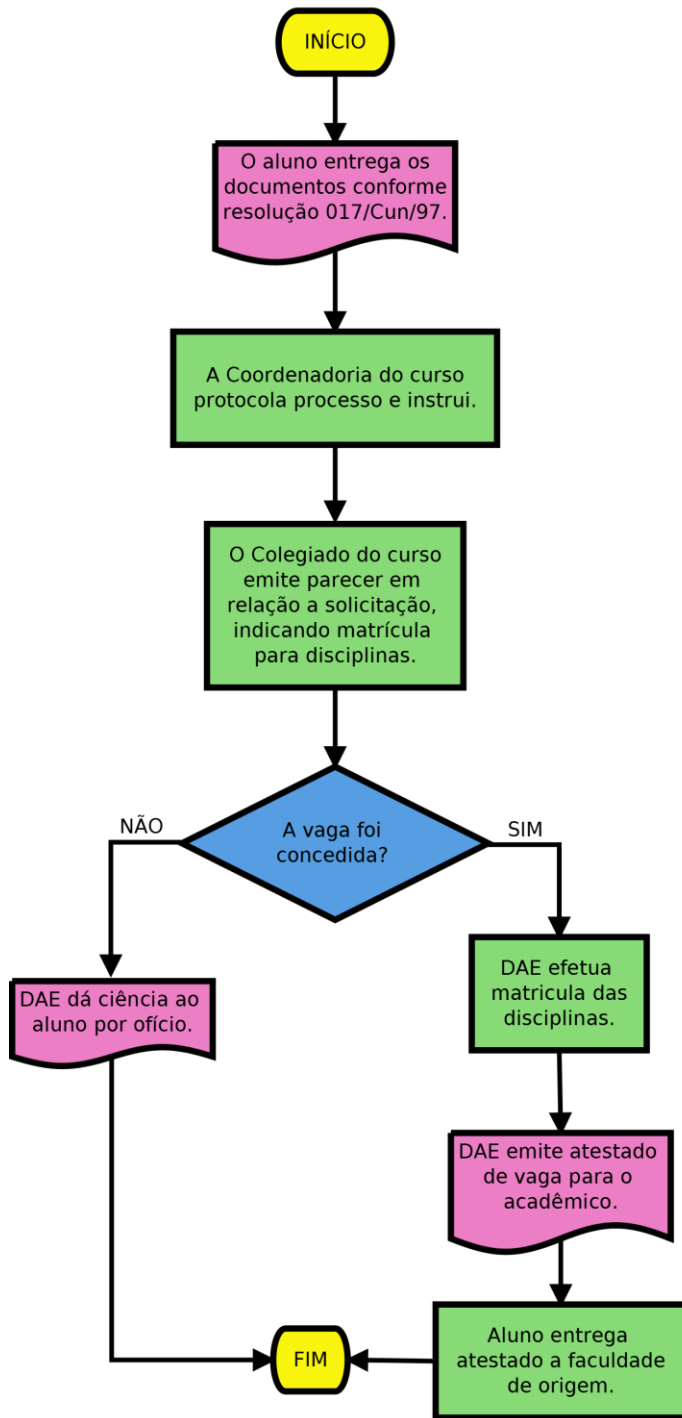
## Trancamento de matrícula



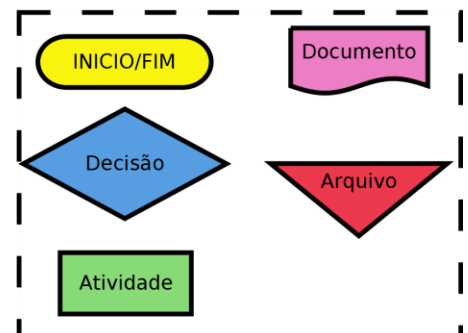
### LEGENDA



## Transfência coercitiva

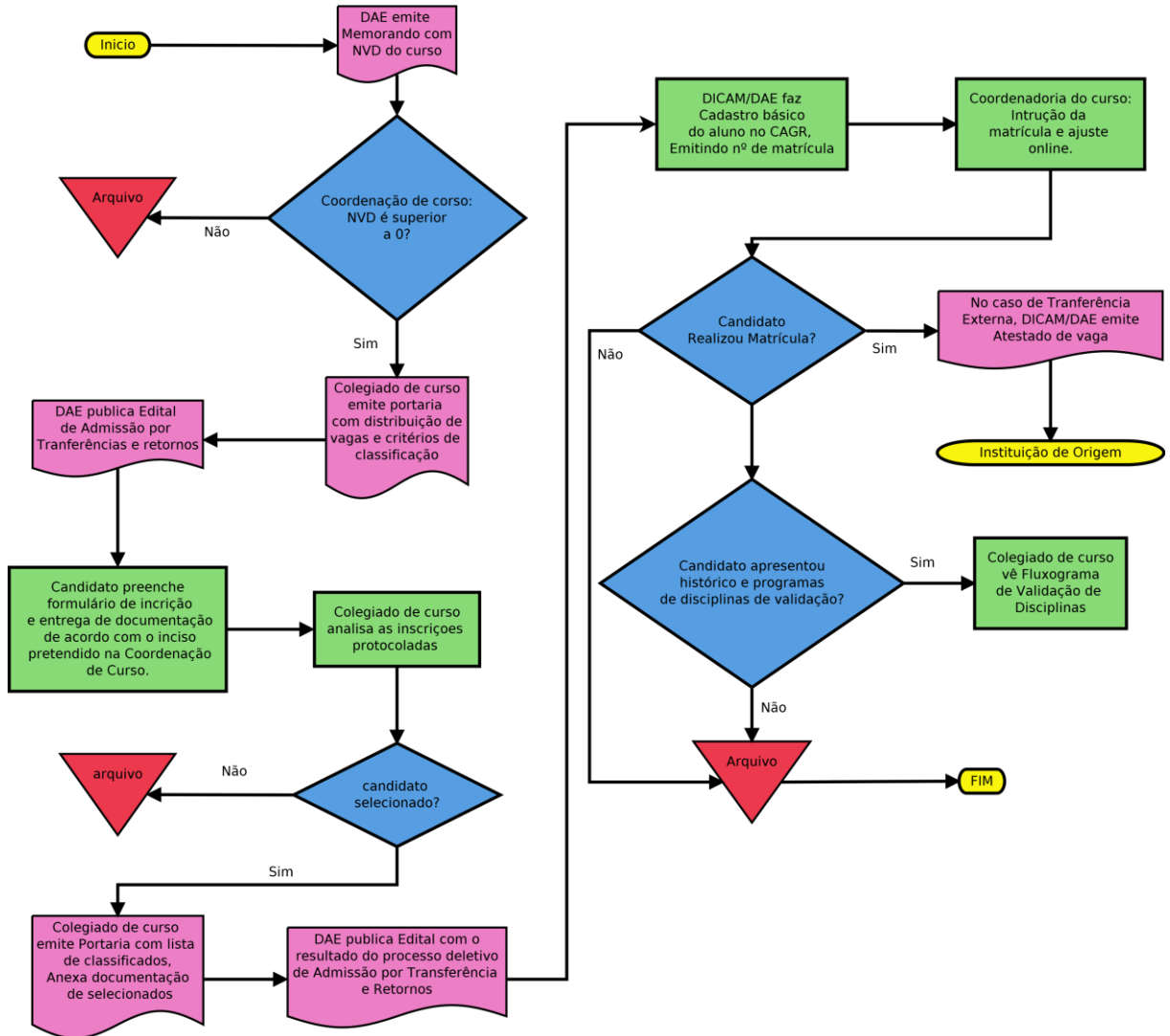


### LEGENDA

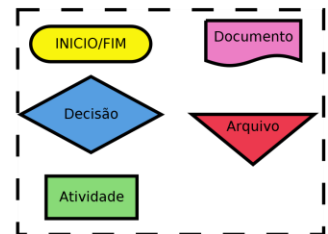




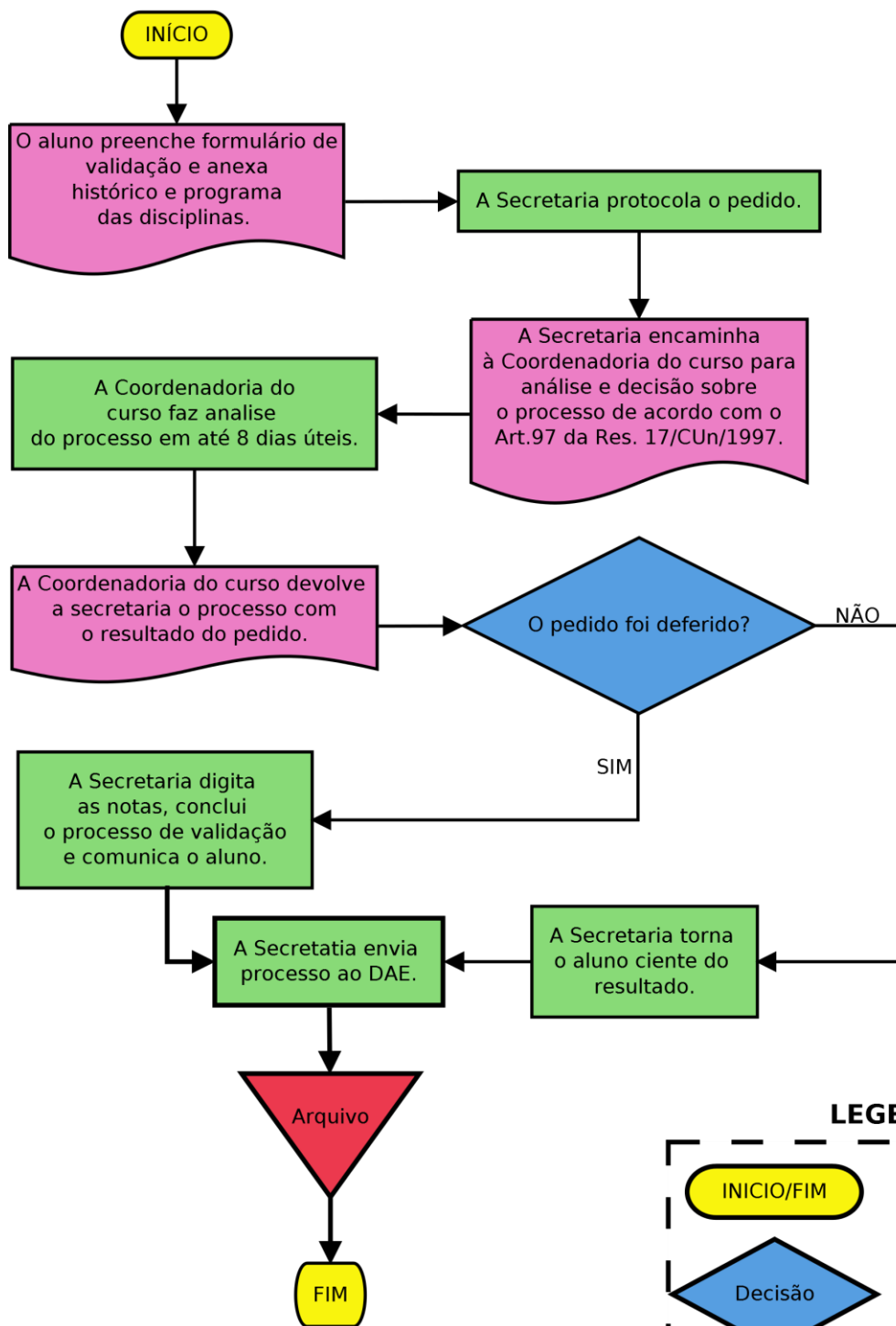
## Transferências via edital de admissão por transferências e retornos



### LEGENDA



# Validação de disciplina



## LEGENDA

